
N-750

Configuration Guide

Version 1.0



Contents

Introduction	1
Features	2
UL Approvals and Agency Listings	2
Compatible UL Listed Receivers	2
Partitioning	3
N-750 Dial Up Installation With On-Board Communicator	4
N-750 Dial Up Installation	6
N-750 Direct Connect Installation	8
N-750 Compatible Reader and Card Formats	10
Device Worksheet	11
Worksheet for Auxiliary Devices	12
Glossary of Terms and Definitions	13

Introduction

This guide is designed to help understand the N-750 panel and the process of assembling a complete system.

The N-750 is a control/communicator for use in commercial security and fire applications, with a built-in communicator for reporting to most central stations. The N-750 includes a sophisticated access control system, through which you can monitor and control user access to specified areas of a building. The benefit of the N-750 is that three separate systems are no longer needed, everything is included in one panel.

The N-750 is ideal for colleges and universities, hospitals, shopping malls, warehouses, office towers, business campuses, senior housing, storage facilities, banks, airports, or wherever there is risk involved.

Features

BURGLAR

Base number of zones	16
Maximum number of zones (expanded)	400
Total partitions*	64
Zone Characteristics/Options	19
Number of users	1800
Event Buffer	1000
User Profiles	100

* Each N-750 has 8 areas that can be divided into 8 sections for a total of 64 partitions. (See page 3 for more information on partitions.)

ACCESS CONTROL

Number of doors	24
Number of touchpads	24 Supervised
Number of readers	24
Number of users	1800

ELECTRICAL

Accessory Power Supply (Source)	2.5 A
Optional Power Supply (Source)	2.5 A
Bell Power	1 A
Siren Driver	Yes
Electronic Overcurrent Protection	Yes

GENERAL

Programming	Touchpad/Software
Software Programmable	Yes
Memory	EEPROM
Answering Machine Bypass	Yes
Optional Printer Interface	Up to 8

DIGITAL COMMUNICATOR

Supported Formats	2
SIA Format	Yes
Contact ID	Yes

UL Approvals and Agency Listings

UL294 Access Control	Yes	UL 1023 Household Burglary	Yes
UL Grade A	Yes	UL 1076 Proprietary Burglary	Yes
UL 365 Police Connect	Yes	UL 1610 C.S. Burglary	Yes
UL 609 Local Burglary	Yes	UL 1635 Digital Burglary Sys.	Yes
UL 611 C.S. Burglary	Yes	UL 1641 Instal. Res. Burglary	Yes
UL 636 Holdup Alarm Units	Yes	ULC Res./Comm. Burglary	Yes
UL 681 Bank Burg Systems	Yes	FCC Part 15	Yes
UL 864 Comm. Fire C.S. (DACT)	Yes	FCC Part 68	Yes
NFPA 72 (Chapter 4)	Yes	DOC CS-03	Yes
UL 985 Household Burglary	Yes	CSFM Res./Comm/ Fire	Yes
		CE Approved	Yes

This system is rated for central fire station fire reporting only. It is not rated for life safety.

Compatible UL Listed Receivers

MANUFACTURER

Silent Knight
Ademco
Sur-Guard
Osborne Hoffman

RECEIVER MODEL

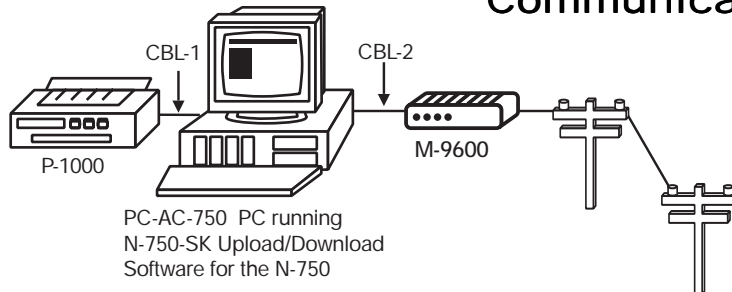
Model 9000
Model 685
SG-MLR2-DG
Quickalert

FORMATS

SIA-1 (20 events per call)
Contact ID
SIA-1, Contact ID
SIA-1, Contact ID

N-750 DIAL UP INSTALLATION

With On-Board Communicator



Computer and Software

PC-AC-750

Stand alone PC for N-750 software includes: CPU, keyboard, mouse, SVGA monitor, parallel printer, and printer cable.

AND/OR

N-750-SK

Upload/download programming software for the N-750. Only one copy is required per dealer. The N-750-SK can support an unlimited number of accounts.

N-750

1	N-750	Security/Access Control Panel
1	N-750-COMM-CBL	RJ31X Cable for Digital Communicator
1	BAT-N-750	12 V, 7 A Battery Backup
1	M-9600	Hi-Speed Communications External Modem
1	CBL-2	M-9600 Serial Interface Cable

ACAS Software/Printer Connection

1-8	N-750-PI	Communications Interface
1	CBL-N-750-PI	Direct Connect Cable-10'
1	N-750-ACAS	End-user Programming Software
1-8	P-1000	Parallel Event/Report Printer
1-8	CBL-1	Parallel Printer Cable

Touchpads/ADMs

1-24*	N-750-PAIT	Programming & Access Touchpad
1-23*	N-750-ADM	Access Door Module

*Not to exceed a combined total of 24 PAITs & ADMs
See page 10 for supported reader and card types

Zone Expanders

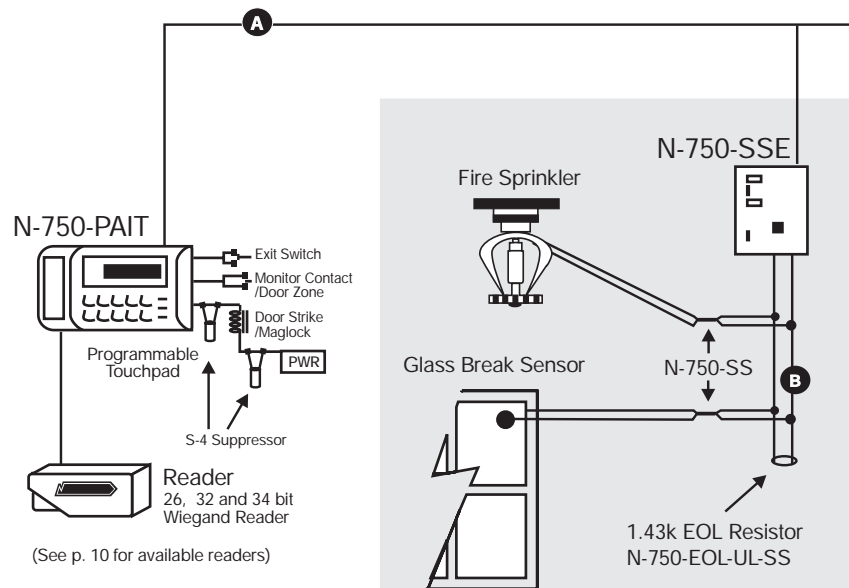
1-3	N-750 SSE	Smart Sensor Serial Zone Expander
1-40	N-750-SS-10	Smart Sensor 10 Pack with Resistor
1-40	N-750-EOL-UL-SS	10 pack EOL UL Resistor 1.43 k for Smart Sensor Expander
1-6	N-750-ZONE	Hardwire Zone Expander
1-40	N-750-EOL-UL	10 pack EOL UL Resistor 4.7 k for hardwire Zone Expander

Not to exceed a combined total of 384 zones
Consult product guide for additional devices

Optional Accessories

N-750-APS	12 VDC Auxiliary Power Supply for N-750
N-750-APS-24	24 VDC Auxiliary Power Supply for N-750
N-750-BELL	Bell Supervision for N-750
N-750-BELL-SUP	Bell Suppressor for N-750-BELL
N-750-DPLM	Dual Phone Line Module for UL Communications
N-750-ENC	Accessory Enclosure for the N-750
N-750-GSM	Ground Start Module for N-750
N-750-KOHP	Knock Out Hole Plug for N-750 (UL 6 Pack)
N-750-TC	UL Tamper Proof Box for X-750 Transformer

(See pages 13-15 for complete descriptions)



The **N-750-PAIT** is a programmable touchpad that can be used to arm/disarm the system, or perform a number of programming functions.

- Up to 24 **N-750-PAITs** per N-750
- 1 SPDT Relay
- 2 Dry Contacts
- +5VDC or +12VDC Output
- Used in conjunction with **N-750-ADM**s, not to exceed a total combination of 24 **N-750-ADM**s and **N-750-PAIT**s.

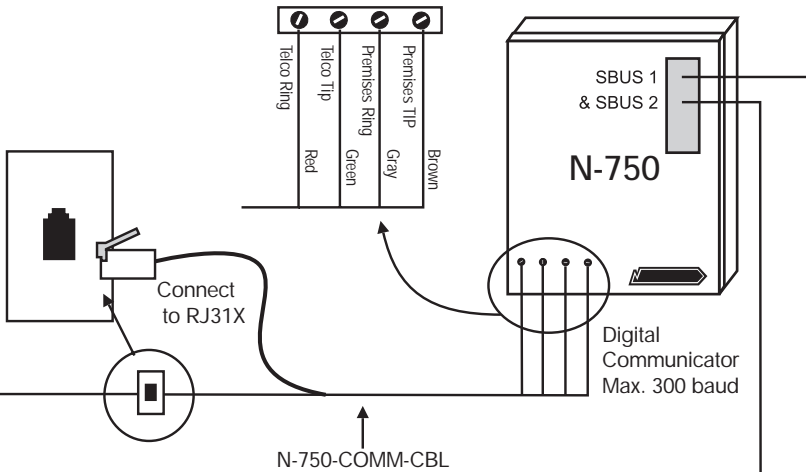
You must have at least one N-750-PAIT per system.

N-750-PAIT

The **N-750-SSE** is a Serial Zone Expander for the N-750. The **N-750-SSE** supports 2 serial lines with a total of 64 points per line and 128 points per unit. The serial lines may be run up to 5000' with an **N-750-SS** Smart Sensor dropped no more than 200' from the device to which it is connected.

- 128 Zones per **N-750-SSE**, 3 **N-750-SSEs** per N-750 for a total of 384 zones
- Used in conjunction with the **N-750-SS** Smart Sensor
- Serial Line can go up to 5000' total distance
- Supervised through **N-750-SS**, for UL applications use the **N-750-EOL-UL-SS** 10 pack
- Can be used in conjunction with **N-750-ZONE**, not to exceed a combination of 384 hardwired and serial zones

N-750-SSE



- A** NC204-PR 1000'
RS-485 4 Conductor 20 AWG Non-Shielded Cable
or
NCP204-PR 1000'
RS-485 4 Conductor 20 AWG Plenum Non-Shielded Cable
- B** NR2221-BR 1000'
2 Conductor 22 AWG Cable for N-750-SSE
or
NCP2221-BR 1000'
2 Conductor 22 AWG Plenum Cable for N-750-SSE

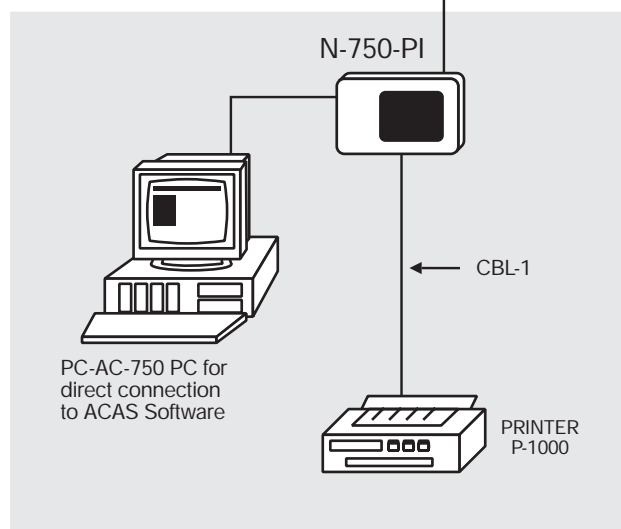


Adds 64 Hardwired Zones

The **N-750-ZONE Expander** creates additional hardwired zones for the N-750.

- 6 **N-750-ZONEs** per N-750
- 384 total hardwired zones
- Connects to either SBUS
- All zones are supervised with the addition of the **N-750-UL-EOL** 10 pack UL approved end of line resistor
- Used in conjunction with **N-750-SSE**, not to exceed a total combination of 384 hardwired and serial zones

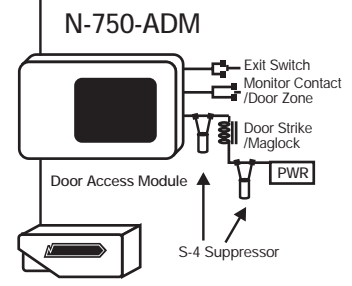
N-750-ZONE



The **N-750-PI** is a Parallel/Serial interface which can be used to connect the N-750 to a printer for report generation and live transaction reporting. The **N-750-PI** can be used for communications to the **N-750-ACAS** software via direct connection with the **CBL-N-750-PI** or via an **M-9600** modem & **CBL-2**.

- **N-750-ACAS** is optional Windows-based software that allows the end user to program the system via a PC-AC-750 Computer System.
- **N-750-ACAS** allows for name entering in the software, custom reports, time window entry, area scheduling, card entry and live event reporting.
- Up to 8 **N-750-PIs** per N-750 system.
- Serial and Parallel Interface
- 9 Pin **RS-232** Connection
- Can be used with partitions for separate reporting per partition.

N-750-ACAS & N-750-PI



Reader
26, 32 and 34 bit Wiegand Reader
(See p.10 for available readers)

The **N-750-ADM** is a card reader expansion device which supports 26, 32 and 34 bit Wiegand format cards.

- Up to 23 **N-750-ADMs** per N-750
- 2 SPDT Relays
- 2 Dry Contacts
- +5VDC or +12VDC Output
- Used in conjunction with **N-750-PAIT**, not to exceed a total combination of 24 **N-750-ADMs** and
- **N-750-PAIT**

N-750-ADM

N-750 DIAL UP INSTALLATION

Computer and Software

PC-AC-750

Stand alone PC for N-750 software includes:
CPU, keyboard, mouse, SVGA monitor, parallel printer,
and printer cable.

AND/OR

N-750-SK

Upload/download programming software for the N-750.
Only one copy is required per dealer. The N-750-SK can
support an unlimited number of accounts.

N-750

1	N-750	Security/Access Control Panel
1	BAT-N-750	12 V, 7 A battery backup
2	M-9600	Hi-Speed Communications External Modem
2	CBL-2	M-9600 Serial Interface Cable

ACAS Software/Printer Connection

1-8	N-750-PI	Communications Interface
1	CBL-N-750-PI	Direct Connect Cable-10'
1	N-750-ACAS	End-user Programming Software
1-8	P-1000	Parallel Event/Report Printer
1-8	CBL-1	Parallel Printer Cable

Touchpads/ADMs

1-24*	N-750-PAIT	Programming & Access Touchpad
1-23*	N-750-ADM	Access Door Module

*Not to exceed a combined total of 24 PAITs & ADMs
See page 10 for supported reader and card types

Zone Expanders

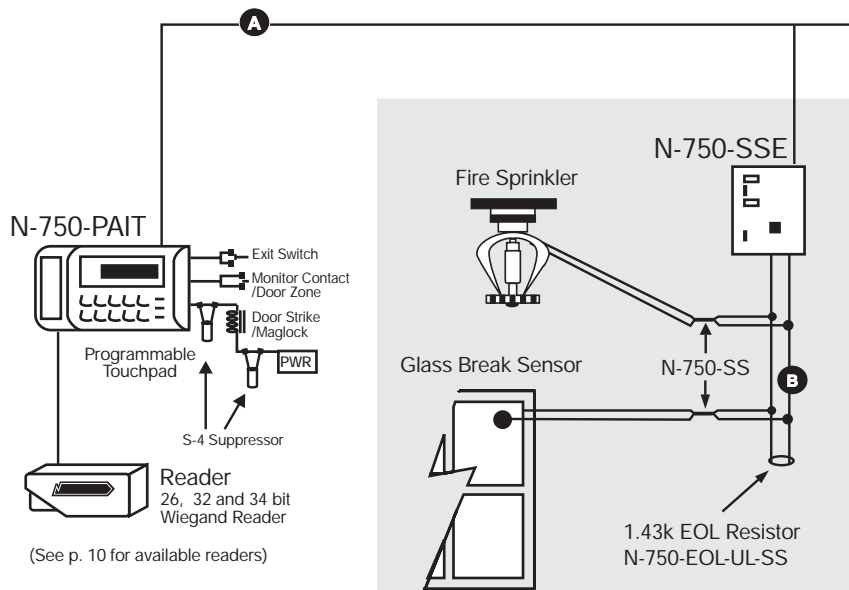
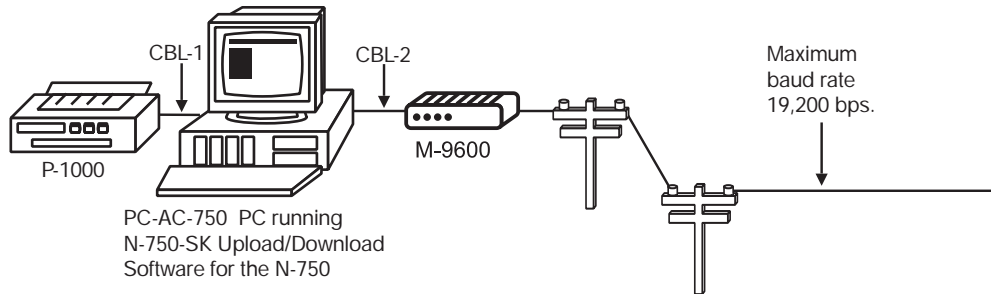
1-3	N-750 SSE	Smart Sensor Serial Zone Expander
1-40	N-750-SS-10	Smart Sensor 10 Pack with Resistor
1-40	N-750-EOL-UL-SS	10 pack EOL UL Resistor 1.43 k for Smart Sensor Expander
1-6	N-750-ZONE	Hardwire Zone Expander
1-40	N-750-EOL-UL	10 pack EOL UL Resistor 4.7 k for hardwire Zone Expander

Not to exceed a combined total of 384 zones
Consult product guide for additional devices

Optional Accessories

N-750-APS	12 VDC Auxiliary Power Supply for N-750
N-750-APS-24	24 VDC Auxiliary Power Supply for N-750
N-750-BELL	Bell Supervision for N-750
N-750-BELL-SUP	Bell Suppressor for N-750-BELL
N-750-COMM-CBL	RJ31X Cable for Digital Communicator
N-750-DPLM	Dual Phone Line Module for UL Communications
N-750-ENC	Accessory Enclosure for the N-750
N-750-GSM	Ground Start Module for N-750
N-750-KOHP	Knock Out Hole Plug for N-750 (UL 6 Pack)
N-750-TC	UL Tamper Proof Box for X-750 Transformer

(See pages 13-15 for complete descriptions)



(See p. 10 for available readers)

The **N-750-PAIT** is a programmable touchpad that can be used to arm/disarm the system, or perform a number of programming functions.

- Up to 24 **N-750-PAITs** per N-750
- 1 SPDT Relay
- 2 Dry Contacts
- +5VDC or +12VDC Output
- Used in conjunction with **N-750-ADM**s, not to exceed a total combination of 24 **N-750-ADM**s and **N-750-PAIT**s.

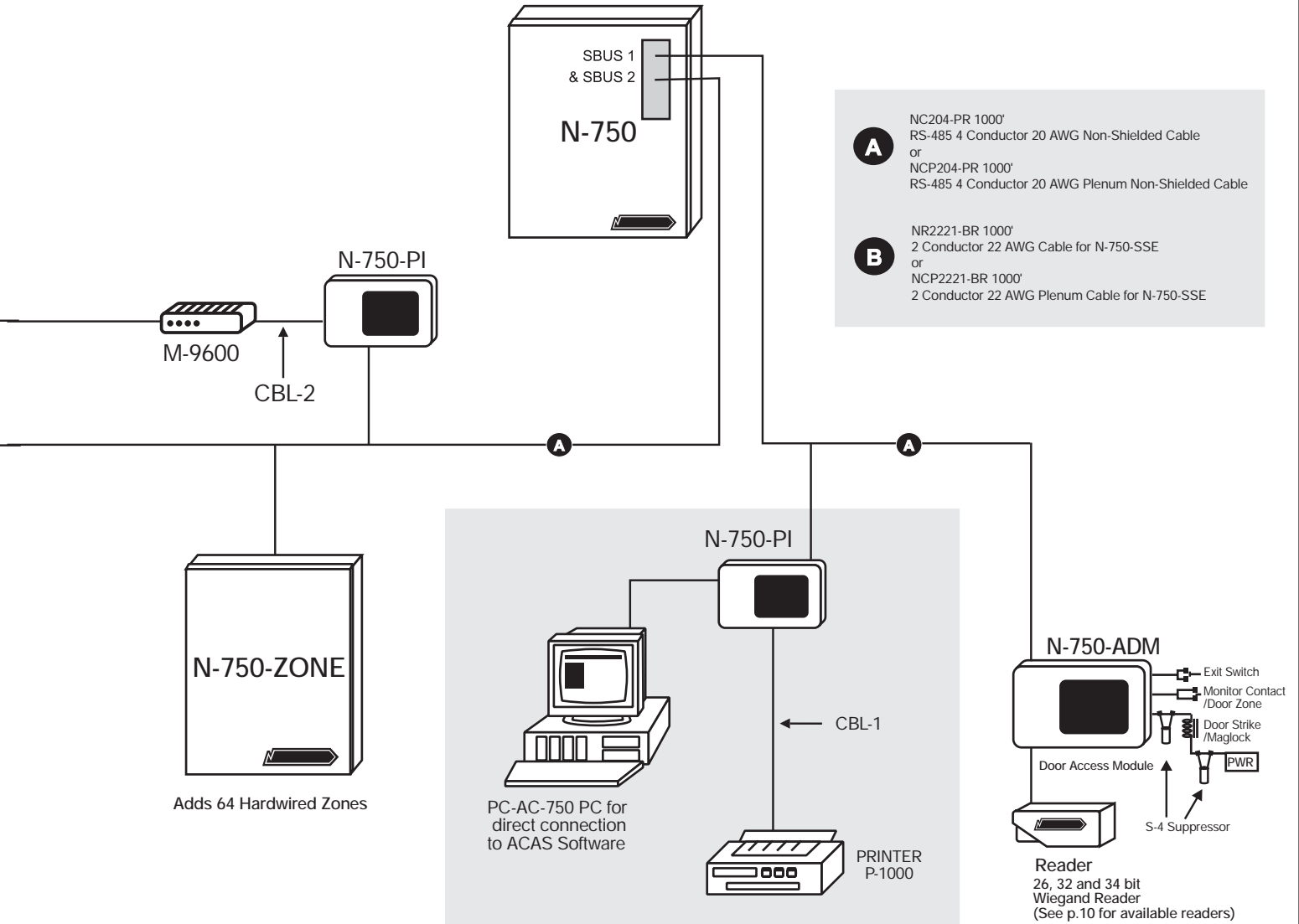
You must have at least one N-750-PAIT per system.

N-750-PAIT

The **N-750-SSE** is a Serial Zone Expander for the N-750. The **N-750-SSE** supports 2 serial lines with a total of 64 points per line and 128 points per unit. The serial lines may be run up to 5000' with an **N-750-SS** Smart Sensor dropped no more than 200' from the device to which it is connected.

- 128 Zones per **N-750-SSE**, 3 **N-750-SSEs** per N-750 for a total of 384 zones
- Used in conjunction with the **N-750-SS** Smart Sensor
- Serial Line can go up to 5000' total distance
- Supervised through **N-750-SS**, for UL applications use the **N-750-EOL-US-SS** 10 pack
- Can be used in conjunction with **N-750-ZONE**, not to exceed a combination of 384 hardwired and serial zones

N-750-SSE



- A** NC204-PR 1000'
RS-485 4 Conductor 20 AWG Non-Shielded Cable
or
NCP204-PR 1000'
RS-485 4 Conductor 20 AWG Plenum Non-Shielded Cable
- B** NR2221-BR 1000'
2 Conductor 22 AWG Cable for N-750-SSE
or
NCP2221-BR 1000'
2 Conductor 22 AWG Plenum Cable for N-750-SSE

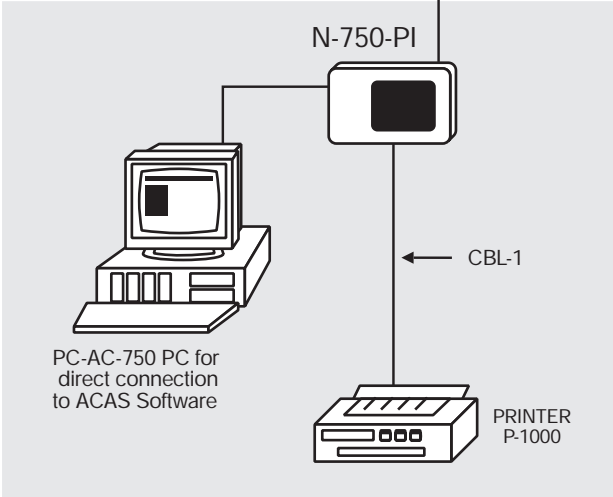


Adds 64 Hardwired Zones

The **N-750-ZONE Expander** creates additional hardwired zones for the N-750.

- 6 **N-750-ZONE**s per N-750
- 384 total hardwired zones
- Connects to either SBUS
- All zones are supervised with the addition of the **N-750-UL-EOL** 10 pack UL approved end of line resistor
- Used in conjunction with **N-750-SSE**, not to exceed a total combination of 384 hardwired and serial zones

N-750-ZONE



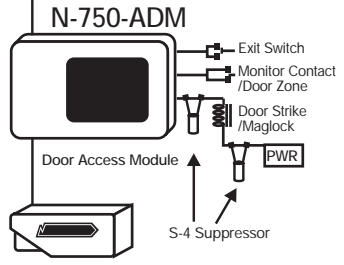
PC-AC-750 PC for direct connection to ACAS Software

PRINTER P-1000

The **N-750-PI** is a Parallel/Serial interface which can be used to connect the N-750 to a printer for report generation and live transaction reporting. The **N-750-PI** can be used for communications to the **N-750-ACAS** software via direct connection with the **CBL-N-750-PI** or via an **M-9600** modem & **CBL-2**.

- **N-750-ACAS** is optional Windows-based software that allows the end user to program the system via a PC-AC-750 Computer System.
- **N-750-ACAS** allows for name entering in the software, custom reports, time window entry, area scheduling, card entry and live event reporting.
- Up to 8 **N-750-PI**s per N-750 system.
- Serial and Parallel Interface
- 9 Pin **RS-232** Connection
- Can be used with partitions for separate reporting per partition.

N-750-ACAS & N-750-PI



Reader 26, 32 and 34 bit Wiegand Reader (See p.10 for available readers)

The **N-750-ADM** is a card reader expansion device which supports 26, 32 and 34 bit Wiegand format cards.

- Up to 23 **N-750-ADM**s per N-750
- 2 SPDT Relays
- 2 Dry Contacts
- +5VDC or +12VDC Output
- Used in conjunction with **N-750-PAIT**, not to exceed a total combination of 24 **N-750-ADM**s and **N-750-PAIT**s.

N-750-ADM

Computer and Software

PC-AC-750

Stand alone PC for N-750 software includes: CPU, keyboard, mouse, SVGA monitor, parallel printer, and printer cable.

AND/OR

N-750-SK

Upload/download programming software for the N-750. Only one copy is required per dealer. The N-750-SK can support an unlimited number of accounts.

N-750

1	N-750	Security/Access Control Panel
1	BAT-N-750	12 V, 7 A Battery Backup

ACAS Software/Printer Connection

1-8	N-750-PI	Communications Interface
1	CBL-N-750-PI	Direct Connect Cable-10'
1	N-750-ACAS	End-user Programming Software
1-8	P-1000	Parallel Event/Report Printer
1-8	CBL-1	Parallel Printer Cable

Touchpads/ADMs

1-24*	N-750-PAIT	Programming & Access Touchpad
1-23*	N-750-ADM	Access Door Module

*Not to exceed a combined total of 24 PAITs & ADMs
See page 10 for supported reader and card types

Zone Expanders

1-3	N-750 SSE	Smart Sensor Serial Zone Expander
1-40	N-750-SS-10	Smart Sensor 10 Pack with Resistor
1-40	N-750-EOL-UL-SS	10 pack EOL UL Resistor 1.43 k for Smart Sensor Expander
1-6	N-750-ZONE	Hardwire Zone Expander
1-40	N-750-EOL-UL	10 pack EOL UL Resistor 4.7 k for hardwire Zone Expander

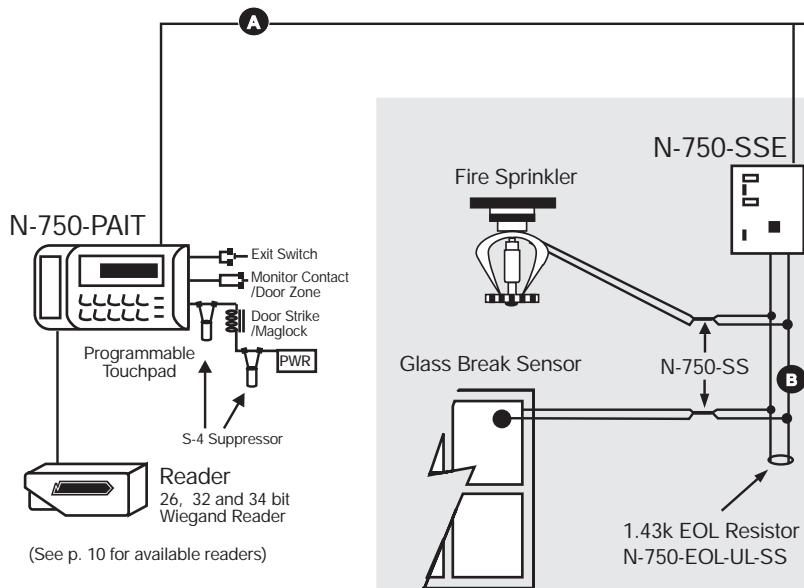
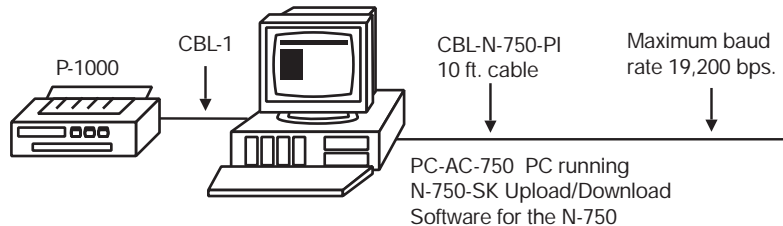
Not to exceed a combined total of 384 zones
Consult product guide for additional devices

Optional Accessories

N-750-APS	12 VDC Auxiliary Power Supply for N-750
N-750-APS-24	24 VDC Auxiliary Power Supply for N-750
N-750-BELL	Bell Supervision for N-750
N-750-BELL-SUP	Bell Suppressor for N-750-BELL
N-750-COMM-CBL	RJ31X Cable for Digital Communicator
N-750-DPLM	Dual Phone Line Module for UL Communications
N-750-ENC	Accessory Enclosure for the N-750
N-750-GSM	Ground Start Module for N-750
N-750-KOHP	Knock Out Hole Plug for N-750 (UL 6 Pack)
N-750-TC	UL Tamper Proof Box for X-750 Transformer
CBL-2	M-9600 Serial Interface Cable
M-9600	Hi-Speed Communications External Modem

(See pages 13-15 for complete descriptions)

N-750 Direct Connect



(See p. 10 for available readers)

The **N-750-PAIT** is a programmable touchpad that can be used to arm/disarm the system, or perform a number of programming functions.

- Up to 24 **N-750-PAITs** per N-750
- 1 SPDT Relay
- 2 Dry Contacts
- +5VDC or +12VDC Output
- Used in conjunction with **N-750-ADMs**, not to exceed a total combination of 24 **N-750-ADMs** and **N-750-PAITs**

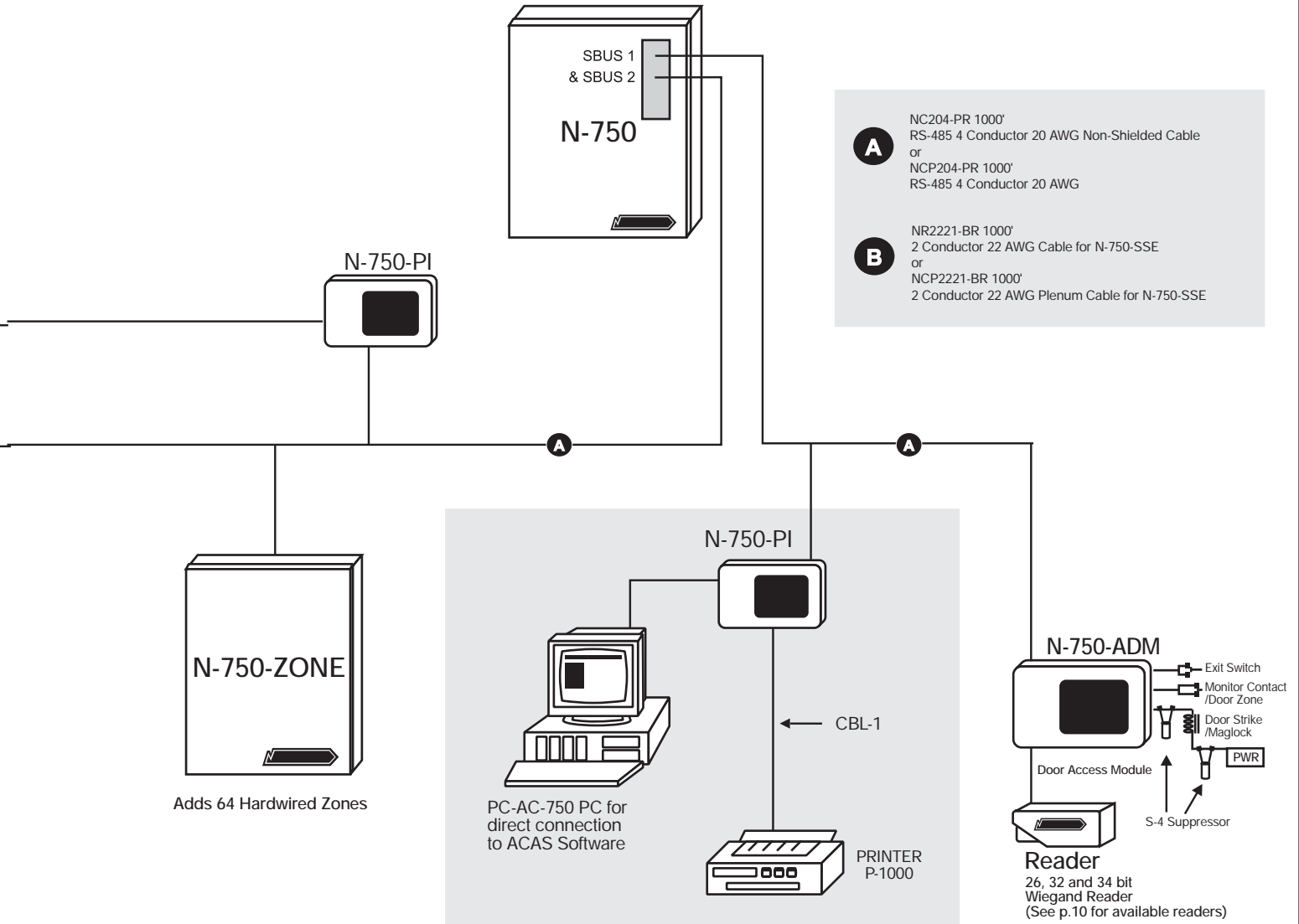
You must have at least one **N-750-PAIT** per system.

N-750-PAIT

The **N-750-SSE** is a Serial Zone Expander for the N-750. The **N-750-SSE** supports 2 serial lines with a total of 64 points per line and 128 points per unit. The serial lines may be run up to 5000' with an **N-750-SS** Smart Sensor dropped no more than 200' from the device to which it is connected.

- 128 Zones per **N-750-SSE**, 3 **N-750-SSEs** per N-750 for a total of 384 zones
- Used in conjunction with the **N-750-SS** Smart Sensor
- Serial Line can go up to 5000' total distance
- Supervised through **N-750-SS**, for UL applications use the **N-750-EOL-US-SS** 10 pack
- Can be used in conjunction with **N-750-ZONE**, not to exceed a combination of 384 hardwired and serial zones

N-750-SSE



- A** NC204-PR 1000'
RS-485 4 Conductor 20 AWG Non-Shielded Cable
or
NCP204-PR 1000'
RS-485 4 Conductor 20 AWG
- B** NR2221-BR 1000'
2 Conductor 22 AWG Cable for N-750-SSE
or
NCP2221-BR 1000'
2 Conductor 22 AWG Plenum Cable for N-750-SSE

The **N-750-ZONE Expander** creates additional hardwired zones for the N-750.

- 6 **N-750-ZONE**s per N-750
- 384 total hardwired zones
- Connects to either SBUS
- All zones are supervised with the addition of the **N-750-UL-EOL** 10 pack UL approved end of line resistor
- Used in conjunction with **N-750-SSE**, not to exceed a total combination of 384 hardwired and serial zones

N-750-ZONE

The **N-750-PI** is a Parallel/Serial interface which can be used to connect the N-750 to a printer for report generation and live transaction reporting. The **N-750-PI** can be used for communications to the **N-750-ACAS** software via direct connection with the **CBL-N-750-PI** or via an **M-9600** modem & **CBL-2**.

- **N-750-ACAS** is optional Windows-based software that allows the end user to program the system via a PC-AC-750 Computer System.
- **N-750-ACAS** allows for name entering in the software, custom reports, time window entry, area scheduling, card entry and live event reporting.
- Up to 8 **N-750-PI**s per N-750 system.
- Serial and Parallel Interface
- 9 Pin **RS-232** Connection
- Can be used with partitions for separate reporting per partition.

N-750-ACAS & N-750-PI

The **N-750-ADM** is a card reader expansion device which supports 26, 32 and 34 bit Wiegand format cards.

- Up to 23 **N-750-ADM**s per N-750
- 2 SPDT Relays
- 2 Dry Contacts
- +5VDC or +12VDC Output
- Used in conjunction with **N-750-PAIT**, not to exceed a total combination of 24 **N-750-ADM**s and **N-750-PAIT**s.

N-750-ADM

N-750 Compatible Reader and Card Formats

The N-750 supports 26, 32 and 34 bit format Wiegand outputs. The following are compatible Northern Card Readers. Please consult the factory if a certain type is not mentioned.

Reader	Card	Bit Structure
CR-1	All Wiegand Cards except SC-2-A and NC-110000	26
NR-1-WR*	NC-2, NPC-2	26, 32
BR-7**	BC-2, BC-2-M (Code 39, 3 of 9, and 2 of 5)	26
PR-MINI-PROX	PVC-H-1, PVC-H-2, PX-4-H, PX-DUO-H, PX-DUOPROX, PX-PROXCARDII, PX-26-H,	34 26
PR-P-PRO	PVC-H-1, PVC-H-2, PX-4-H, PX-DUO-H, PX-DUOPROX, PX-PROXCARDII, PX-26-H,	34 26
PR-MAX-PRO	PVC-H-1, PVC-H-2, PX-4-H, PX-DUO-H, PX-DUOPROX, PX-PROXCARDII, PX-26-H,	34 26
PR-ASR-500	PX-121-I, PVC-I-3, PVC-I-4, PX-115-I	26
PR-ASR-503	PX-121-I, PVC-I-3, PVC-I-4, PX-115-I	26
PR-ASR-505	PX-121-I, PVC-I-3, PVC-I-4, PX-115-I	26
PR-ASR-603	PX-121-I, PVC-I-3, PVC-I-4, PX-115-I	26
PR-ASR-605	PX-121-I, PVC-I-3, PVC-I-4, PX-115-I	26
PR-ASR-610	PX-121-I, PVC-I-3, PVC-I-4, PX-115-I	26
PR-ASR-110	PX-121-I, PVC-I-3, PVC-I-4, PX-115-I	26
PR-ASR-112	PX-121-I, PVC-I-3, PVC-I-4, PX-115-I	26
PR-ASR-120	PX-121-I, PVC-I-3, PVC-I-4, PX-115-I	26
PR-ASR-122	PX-121-I, PVC-I-3, PVC-I-4, PX-115-I	26
PR-ASR-136	PX-121-I, PVC-I-3, PVC-I-4, PX-115-I	26
KP-11		32
KP-11/26		26
KP-13		32
KP-13-26		26

* Does not support ABA

** 5 Digit Wiegand Barcode Only

Device Worksheet

Current Draw Worksheet for N-750 Modules

Device	Number of Devices	Current per Device	Total Standby Current	Total Alarm Current
Model N-750 Control\Communicator	1 (1 max.)	Standby: 100 mA Alarm: 120 mA	100 mA	120 mA
N-750-ADM Door Module	_____ (23 max.*)	Standby: 25 mA Alarm: 40 mA	_____ mA	_____ mA
N-750-PAIT Touchpad	_____ (24 max.*)	Standby: 48 mA Alarm: 90 mA	_____ mA	_____ mA
N-750-SLTP Touchpad (used with the N-750-ADM)	_____ (24 max.)	Standby: 10 mA Alarm: 10 mA	_____ mA	_____ mA
N-750-PI Printer Interface	_____ (8 max.)	Standby: 40 mA Alarm: 40 mA	_____ mA	_____ mA
N-750-SSE Smart Sensor Expander	_____ (3 max.)	Standby: 80 mA Alarm: 80 mA	_____ mA	_____ mA
N-750-ZONE 64 Point Zone Expander	_____ (6 max.)	Standby: 80 mA Alarm: 80 mA	_____ mA	_____ mA
N-750-DPLM Dual Phone Line Monitor	1 (1 max.)	Standby: 0 mA Alarm: 18 mA	_____ mA	_____ mA
N-750-BELL Module	1 (1 max.)	Standby: 5 mA Alarm: 60 mA	_____ mA	_____ mA
Card Readers	_____ (24 max.)	Standby: _____ mA Alarm: _____ mA	_____ mA	_____ mA
N-750-GSM Ground Start Relay	1 (1 max.)	Standby: 0 mA Alarm: 18 mA	_____ mA	_____ mA
A. Subtotal of current ratings for Northern Computers devices			_____ mA Standby	_____ mA Alarm

*NOTE: The combined total of N-750-ADMs and N-750-PAITs is not to exceed 24 devices.

NOTE: The N-750-BELL shares its power with the auxiliary output. The auxiliary output is rated at 1A total current for all devices.

Worksheet for Auxiliary Devices

Use this worksheet to record current draw for N-750-compatible devices which are not manufactured by Northern Computers. These could include signalling devices, smoke detectors, etc.

Device	Number of Devices	Current per Device	Total Standby Current	Total Alarm Current
--------	-------------------	--------------------	-----------------------	---------------------

SMOKE DETECTORS Refer to device manual for current ratings.

		Standby: _____ mA Alarm: _____ mA	_____ mA	_____ mA
		Standby: _____ mA Alarm: _____ mA	_____ mA	_____ mA
		Standby: _____ mA Alarm: _____ mA	_____ mA	_____ mA
		Standby: _____ mA Alarm: _____ mA	_____ mA	_____ mA
		Standby: _____ mA Alarm: _____ mA	_____ mA	_____ mA

SIGNALING DEVICES Refer to device manual for alarm current ratings. Standby current is always 0 mA.

		Alarm: _____ mA		_____ mA
		Alarm: _____ mA		_____ mA
		Alarm: _____ mA		_____ mA

OTHER DEVICES Refer to device manual for current ratings.

		Standby: _____ mA Alarm: _____ mA	_____ mA	_____ mA
		Standby: _____ mA Alarm: _____ mA	_____ mA	_____ mA
		Standby: _____ mA Alarm: _____ mA	_____ mA	_____ mA

B. Subtotal of current ratings for auxiliary devices listed above

		_____ mA	_____ mA
		Standby	Alarm

A. Subtotal of current ratings for Northern Computers devices

		_____ mA	_____ mA
		Standby	Alarm

C. Total current ratings of all devices in system devices

	(Row A + Row B)	_____ mA	_____ mA
		Standby	Alarm

Glossary of Terms and Definitions

N-750: The N-750 is a control/communicator for use in residential and commercial security applications, commercial and residential fire applications. The N-750 includes a sophisticated access control system, through which you can monitor and control user access to specific areas of a building. Power: 18 VAC, 60 Hz, 50 VA, Temp: 32 to 120 F (0 to 49 C), Dimensions: 15"W x 20"H x 3"D, Weight 17lbs.

N-750-ACAS: The Access Control Administration Software (N-750-ACAS) enables you to manage the access control functions of the security system. Used in conjunction with the N-750 security system, you can use ACAS to manage a database of users and system events. Establishing a communication function enables system operators to upload and store events from the control panel, from both on and off site locations. This information can then be used in generating reports, which can be displayed and printed based on event selection and sort criteria. N-750-ACAS also enables management of user and site information, such as access codes and security levels, user profiles, and time schedules.

N-750-ADM: The N-750-ADM is a card reader interface for the N-750. The N-750-ADM can be used in conjunction with the N-750-PAIT for a total combination of 24 devices. The N-750-ADM has 2 SPDT relays for door lock and door held open and 2 contact inputs for door egress and status. The touchpad can also be used to program the system in addition to arming and disarming alarms.

N-750-APS: The N-750-APS is a notification and auxiliary power expander that provides up to 2.5 amps of and 12 volt power for powering notification appliances and auxiliary devices. The N-750-APS uses the N-750 snap track located in the N-750 cabinet or the N-750-ENC accessory enclosure.

N-750-APS-24: The N-750-APS-24 is a notification and auxiliary power expander that provides up to 6 amps of regulated, 24 volt power for powering notification appliances and auxiliary devices. The N-750-APS-24 provides its own AC power connec-

tion, battery charging circuit, and battery connections. Used with security and fire panels, the N-750-APS-24 enables you to connect and distribute power to many more devices than your panel may normally allow.

N-750-BELL: The N-750-BELL module provides an output for a bell sounding device to annunciate alarms from the N-750 system.

N-750-BELL-SUP: The N-750-BELL-SUP provides supervision of the N-750-BELL and is required for UL applications.

N-750-COMM-CBL: The N-750-COMM-CBL is a 3' RJ31X cord for connecting a phone line to the built in digital communicator on the N-750. The cable can also be used when the N-750-DPLM dual phone line adapter is installed in the N-750.

N-750-DPLM: The N-750-DPLM provides a second phone line connection. The N-750-DPLM includes a line monitor and ring detector for a second line. The N-750-DPLM is required for UL installations. The N-750-DPLM connects and mounts directly to the standoffs provided on the panel. Power: 11 to 14 VDC at 20 mA (active only), Temp: 32 to 120 F (0 to 49 C), Dimensions: 2.175"W x 2.375"H x 1.75"D (including mounts).

N-750-ENC: Standard N-750 size enclosure with an 2 snap tracks. Snap tracks are used to mount accessories such as the N-750-APS and N-750-SSE. Each enclosure can hold 4 accessories, as well as 2 BAT-N-750s. Dimensions: 15"W x 20"H x 3"D.

N-750-EOL-UL-10: The N-750-EOL-UL-10 is a 10 pack of End-of-Line UL approved 4.7 k resistors. The N-750-EOL-UL-10 is used for all hardwire input zones on the N-750. (The N-750-EOL-UL-10 is not used with the N-750-SS, use the N-750-EOL-UL-SS).

N-750-EOL-UL-SS: The N-750-EOL-UL-SS End-of-Line resistors are a 10 pack of 1.43K ohm resistors for use with the N-750-SS. The N-750-EOL-UL-SS is required for UL applications.

N-750-GSM: The N-750-GSM is for a ground start telephone system, and consists of a ground start chip. Please note that a ground start module cannot be used in UL applications.

N-750-INPT-CNCT: The N-750-INPT-CNCT is a connector that plugs into the N-750-PAIT. This allows for the input zones and output relay of the N-750-PAIT to be connected. One unit comes standard with each N-750-PAIT.

N-750-KOHP: The N-750-KOHP provide tamper proof hole plugs for the N-750 enclosure. The N-750-KOHP comes in a pack of 6 UL approved knock out hole plugs.

N-750-PAIT: The N-750-PAIT is a commercial touchpad that can be used as a door access station. The N-750-ADM can be used in conjunction with the N-750-ADM for a total combination of 24 devices. The N-750 system must have at least one N-750-PAIT. The N-750-PAIT has 1 SPDT relay for door lock and 2 contact inputs for door egress and status. The touchpad can also be used to program the system in addition to arming and disarming alarms and checking the status of areas.

N-750-PI: The N-750-PI Serial/Parallel Module provides one 9 pin RS-232 serial port and one parallel printer port. Eight N-750-PIs can be used per N-750. The N-750 can be used for either connection to a PC directly using the CBL-N-750 or in conjunction with an M-9600 and CBL-2 for remote communications.

N-750-RDR-CNCT: The N-750-RDR-CNCT is a 5 wire Wiegand connector that plugs into the N-750-PAIT. This allows a Wiegand format reader to be plugged directly into the N-750-PAIT. One unit comes standard with each N-750-PAIT.

N-750-SK: The N-750-SK upload/download software is for programming the N-750 system by the installing dealer or central station. The software programs partitions, zones, time windows, user levels, system devices, and central station reporting accounts. Only one copy is required per dealer. Each copy can support an unlimited number of panels.

N-750-SLTP: The N-750-SLTP is an indoor/outdoor touchpad with weather resistant housing. The N-750-SLTP can be used to arm/disarm an N-750 system as well as used for door access as entry only or in conjunction with a card reader for high security with a combination card and pin number. The touchpad has "READY" and "Armed" lights, but there is no display screen. The N-750-SLTP must be interfaced with the N-750-ADM. Current Draw: 10 mA, Temp: 32 to 120 F (0 to 49 C), Dimensions: 1.5"W x 6.37"H x .5"D.

N-750-SS: The N-750-SS SmartSensor is used in conjunction with the N-750-SSE. The N-750-SS connects to serial loops on the N-750-SS controller module. N-750-SS SmartSensor point ID modules allow connection to and point identification of, most security devices. SmartSensor point ID modules are addressed on-site using an N-750-PAIT.

N-750-SSE: The N-750-SSE Serial Zone Expander is a UL listed zone expansion system. The N-750-SSE is used in conjunction with the N-750-SS Smart Sensor. Each N-750 system can support a total of 3 N-750-SSE expanders for a total of 384 points, with 128 points per N-750-SSE. Each point on the N-750-SSE is addressed with an N-750-SS. The N-750-SS does not have a built-in end-of-line resistor, and the N-750-EOL-UL-SS resistor should be used for all UL Smart Sensor applications.

N-750-TC: The N-750-TC transformer cover is a UL rated outlet cover for a standard duplex outlet. The N-750-TC is required for NFPA 71 and NFPA 72A fire alarm installations to protect class 2 transformer and power wiring to N-750 control. Knockouts provided for 3/4" conduit. Dimensions: 3.625" W x 6.125"H x 2.5"D.

N-750-ZONE: The N-750-ZONE is a hardware expander that allows 64 zones to be added to the N-750 system. A total of six N-750-ZONE modules can be added to the system (if no other zone expansion device is being used).

NOTES:



Northern Computers, Inc.
Leaders in Access Control Technology

Headquarters:
5007 S. Howell Ave.
Milwaukee, WI 53207 USA

<http://www.nciaccess.com>

Phone: (414) 769-5980
Fax: (414) 769-5989

Worldwide Locations

Canada United Kingdom Germany France Italy Russia Egypt Brazil Mexico Ecuador Argentina Hong Kong Australia Japan