



F E A T U R E S

WIN-PAK 1.17 is a full-featured access control software package running on Windows XP, 2000, or NT. It provides access control, alarm monitoring, video imaging and card badging at an economical price.

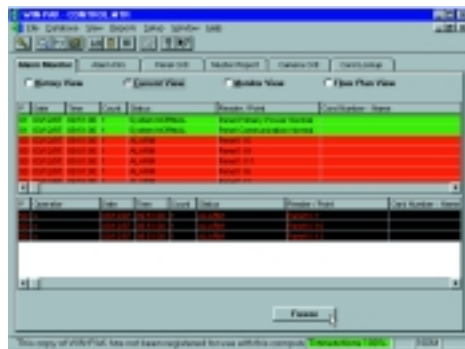
WIN-PAK 1.17 has easy-to-use menus, drop boxes and toolbars for history retrieval, database access and report generation, including muster and attendance reports.

WIN-PAK 1.17 takes full advantage of the flexibility of Northern's control panels. WIN-PAK 1.17 can support up to thirty-two communication ports, while its networking capability allows the addition of up to five workstations per server.

WIN-PAK 1.17 features include validation of data entry, alarm prioritization, a scheduler and CCTV control with on-screen video. Bitmaps can be imported for the integration of floor plans with alarm monitoring and video badging.

- Dynamic floor plan graphics with multiple level maps
- Camera control display
- Ability to have multiple language text
- Supports video imaging and card badging
- Supports up to 250 remote locations and 3,968 panels with direct connect
- Supports networking
- Supports up to 32 communication ports (requires additional hardware)
- Smart scheduling for dial-up and dial-back from remote location
- Database and history are stored in Xbase format
- Bitmap files can be imported for photos, backdrops and floor plans
- Guard tour by readers or points
- Card locate
- Integrated CCTV control
- Card activation/deactivation by day/month/year
- Muster and In/Out reporting
- Print both front and back on PVC style cards
- Encode magnetic stripe cards

The Alarm monitor screen reports all alarm and reader activity as it happens. The user has four options of how information can be viewed. The user can view alarms as they come in (History view,) in order of priority (Current view), by defined alarm points and current status in a grid (Monitor view), or by graphic floor plans (Floor Plan view).



Monitoring of cameras can be done with the Camera Control Screen if a video capture board is installed. This screen is adjustable in size and can be located anywhere on the WIN-PAK 1.17 screen.

WIN-PAK 1.17 ACCESS CONTROL SOLUTIONS

Specifications

Access Control (using N-1000-IV-X)

- Cardholder capacity: 25,000 per N-1000-IV-X with optional memory expansion
- Time zones: 63 per N-1000-IV-X
- Holidays: 32 per controller
- On-line transaction storage: Limited only by drive space
- Controllers: 992 hardwired RS485
- Readers: 3,968 hardwired RS485
- Elevator control: Up to 24 floors & 32 definitions

Alarm Monitoring

- Monitor points: 15,872
- Normally open or normally closed
- Alarm/normal/trouble/ajar
- Supervised or non-supervised
- Operator instructions: Definable per alarm point & state
- Graphical maps using .BMP files

Reporting & Operating

- 25 user-defined cardholder data fields
- Operators/passwords: Unlimited
- Export Reports in a delimited format
- History
- Card History
- Events
- Database
- Attendance
- Muster/Tracking

Technology Support

- Proximity
- Wiegand
- Keypad
- Magnetic Stripe
- Barcode
- Biometrics (Hand & Fingerprint)
- Card and PIN

Standard Features

- Access control
- System and activity monitoring
- Database management
- Database & event reporting
- Photo ID badge production
- Floor plans
- Guard tour
- Mustering & tracking
- CCTV integration

Other

- Interface: Complies with Microsoft interface guidelines
- Database engines: Xbase
- Networking protocols: TCP/IP

Hardware Basics

Minimum Requirement Configuration

This setup is sufficient for small systems with 1 to 10 readers, up to 250 cards and 2 communication ports. This configuration works well for a stand alone or workstation, but is not sufficient for use as a WIN-PAK™ server.

- Pentium 133 MHz CPU
- 128 MB of RAM
- 210 MB hard drive space
- 2 serial communication ports
- Tape backup drive
- 2 button mouse (PS2 mouse preferred)
- 15" SVGA color monitor (800x600, 256 color)
- 1 parallel port (2 for badging)
- 16X CD-ROM minimum
- Microsoft Windows XP Professional, Windows 2000 Professional, Windows NT 4.0 Service Pack 6a

Recommended Configuration

This is the recommended hardware configuration for basic access control, including badging. For systems with 1 to 100 readers, up to 5,000 cards and up to 8 communication ports. It can be used for a stand-alone system, a workstation or a WIN-PAK™ server. However, additional RAM will improve performance.

- Pentium II 300 MHz CPU
- 128 MB of RAM
- 210 MB hard drive space
- 2 serial communication ports
- Tape backup drive
- 2 button mouse (PS2 mouse preferred)
- 17" SVGA color monitor (1024 x 768, true-color)
- 1 parallel port (2 for badging)
- 16X CD-ROM minimum
- Microsoft Windows XP Professional, Windows 2000 Professional, Server, Service Pack 1, Windows NT 4.0 Service Pack 6a



BENEFITS

- Complete access control operating in Windows 3.11, Windows 95, or Windows 98 with WIN-PAK 1.16. Windows NT, 2000, or XP with WIN-PAK 1.17
- Includes card access, alarm monitoring, video database, photo ID badging and CCTV control
- Easy to understand screens and menus
- Muster and Guard Tour functions
- Reports can be exported to a number of industry standard formats
- Live on-screen video capability
- Password protection allows multiple levels of access to program features
- Keypad card numbers and PIN numbers can be hidden from the operator
- Flexible design allows easy expansion for future growth

WIN-PAK 1.17 ACCESS CONTROL SOLUTIONS

Hardware Basics (cont'd)

Performance Configuration

This configuration is recommended for systems using more than 16 communication ports. It is suitable for systems using maximum reader and card capacity, up to 25,000 cards and 32 communications ports. It is ideal for a large stand-alone system or a WIN-PAK™ server.

- Pentium III 500 Mhz CPU
- 256 MB of RAM
- 18.4 gigabyte SCSI hard drive
- 32 serial communication ports
- 20 gigabyte SCSI tape backup drive
- 2 button mouse (PS2 mouse preferred)
- 19" (1280 x 1024, true-color) monitor
- 1 parallel port (2 for badging; badging should be done on workstation)
- 16X CD-ROM minimum
- Microsoft Windows XP Professional, Windows 2000 Professional, Server, Service Pack 1, Windows NT 4.0 Service Pack 6a

Recommended Components

Controllers

- N-1000-II Two Reader Controller Module
- N-1000-II-X Two Reader Controller Module with four additional relay outputs and additional card capacity
- N-1000-III Two Reader Controller Module
- N-1000-III-X Two Reader Controller Module with four additional relay outputs and additional card capacity
- N-1000-IV Four Reader Controller Module
- N-1000-IV-X Four Reader Controller Module with four additional relay outputs and additional card capacity

Hardwired Communication Devices for N-1000 Series Controllers

- RS-232 to RS-485 single port converter (N-485-PCI-2)
- RS-232 to 20ma single port converter (C-100-A1)

Network Communication Devices for N-1000 Series Controllers

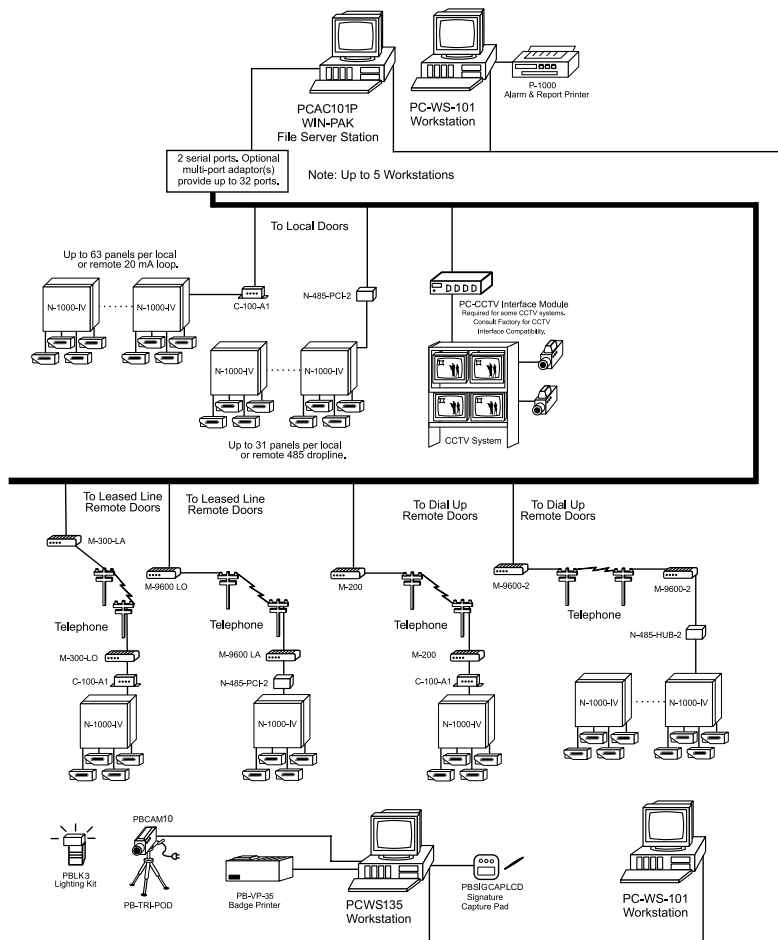
- RS-232 to LAN converter, 10/100 mbps (LANSRL100)
- RS-232 to RS-485 converter that works in conjunction with the LANSR100L (N485PCI2L)



BENEFITS:

- Networking capabilities accommodate multiple users at one location
- Supports all N-1000 series panels
- Supports up to thirty-two communication ports
- Supports all popular reader technologies
- Cardholders may be tracked anytime, anywhere, using the Tracking & Muster view / report
- 25 user-defined note fields are available for each cardholder providing more information for authorized system operators
- User-friendly auto-card lookup provides immediate and detailed information to enable quick response to each card read or each card presentation

WIN-PAK CONFIGURATION





ORDERING INFORMATION

Order #	Description
---------	-------------

WIN-PAK™ 1.17 Management System

Software Only

WINPAK117 Single user license

Computer Systems

PCAC101P Single user license, stand-alone access control system; includes software, computer, RS-485 communication converter and event printer

PCAC102P Single user license, stand-alone access control system; includes software, computer, and RS-485 communication converter

Stand-alone System with Badging

PCAC105P WIN-PAK 1.17 badging ready computer, RS-485

PCAC111P WIN-PAK 1.17 badging system, RS-485, with PBVP3

PCAC132P WIN-PAK 1.17 badging system, RS-485, with PBVP32

PCAC132MOP WIN-PAK 1.17 badging system, RS-485, with PBVP32MO

PCAC133DMP WIN-PAK 1.17 badging system, RS-485, with PBVP33DM

Order #	Description
---------	-------------

Stand-alone System with Badging (cont'd.)

PCAC133DOP WIN-PAK 1.17 badging system, RS-485, with PBVP33DO

PCAC134DMLP WIN-PAK 1.17 badging system, RS-485, with PBVP34DML

PCAC134DOLP WIN-PAK 1.17 badging system, RS-485, with PBVP34DOL

PCAC135P WIN-PAK 1.17 badging system, RS-485, with PBVP35

PCAC135DMP WIN-PAK 1.17 badging system, RS-485, with PBVP35DM

PCAC135DOP WIN-PAK 1.17 badging system, RS-485, with PBVP35DO

PCAC135MOP WIN-PAK 1.17 badging system, RS-485, with PBVP35MO

PCAC136DMP WIN-PAK 1.17 badging system, RS-485, with PBVP36DM

PCAC136DOP WIN-PAK 1.17 badging system, RS-485, with PBVP36DO

PCAC137P WIN-PAK 1.17 badging system, RS-485, with PBVP37

PCAC138P WIN-PAK 1.17 badging system, RS-485, with PBVP38

135 West Forest Hill Ave
Oak Creek, WI 53154
414 769-5980
414 766-1798 Fax
<http://www.nciaccessworld.com>

Use  online @ www.nciaccessworld.com

Copyright © 2002 Northern Computers, Inc. • All Rights Reserved © U.S. Registered Trademark
™ WIN-PAK is a trademark of Northern Computers, Inc.
Windows 95, 98, 2000, NT, XP, Microsoft SQL, Microsoft MDSE are registered trademarks of Microsoft Corporation

 Northern